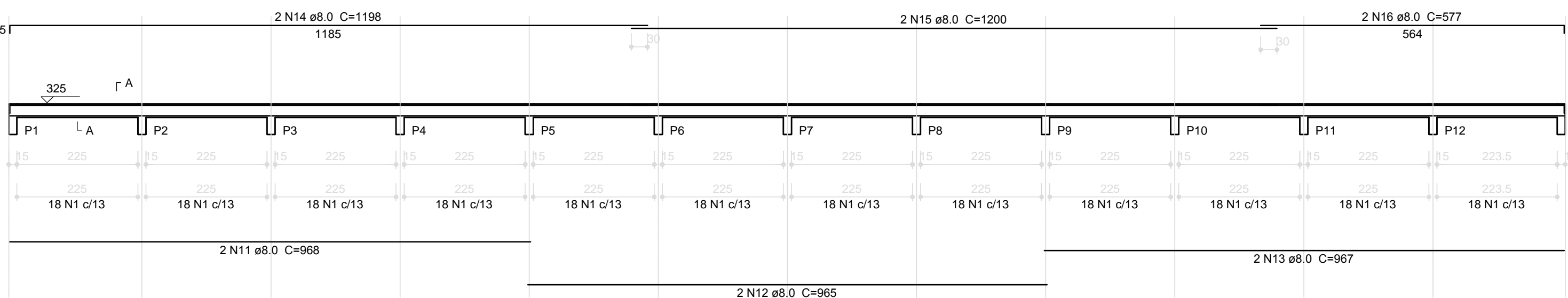
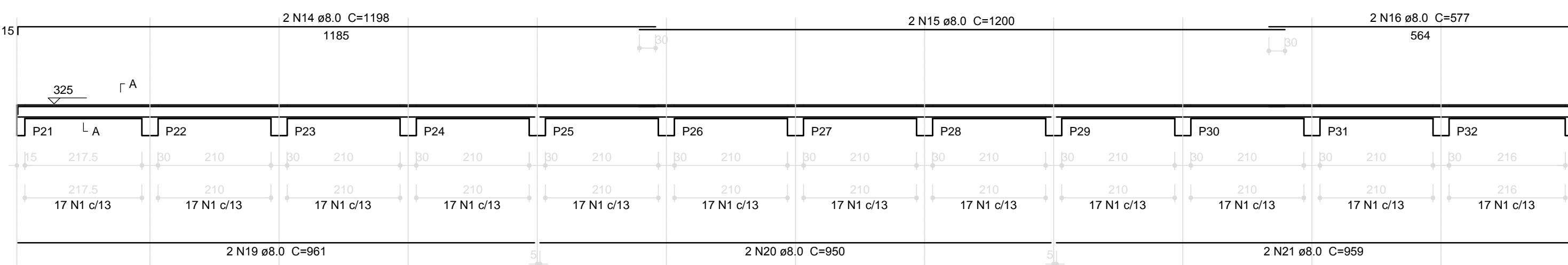


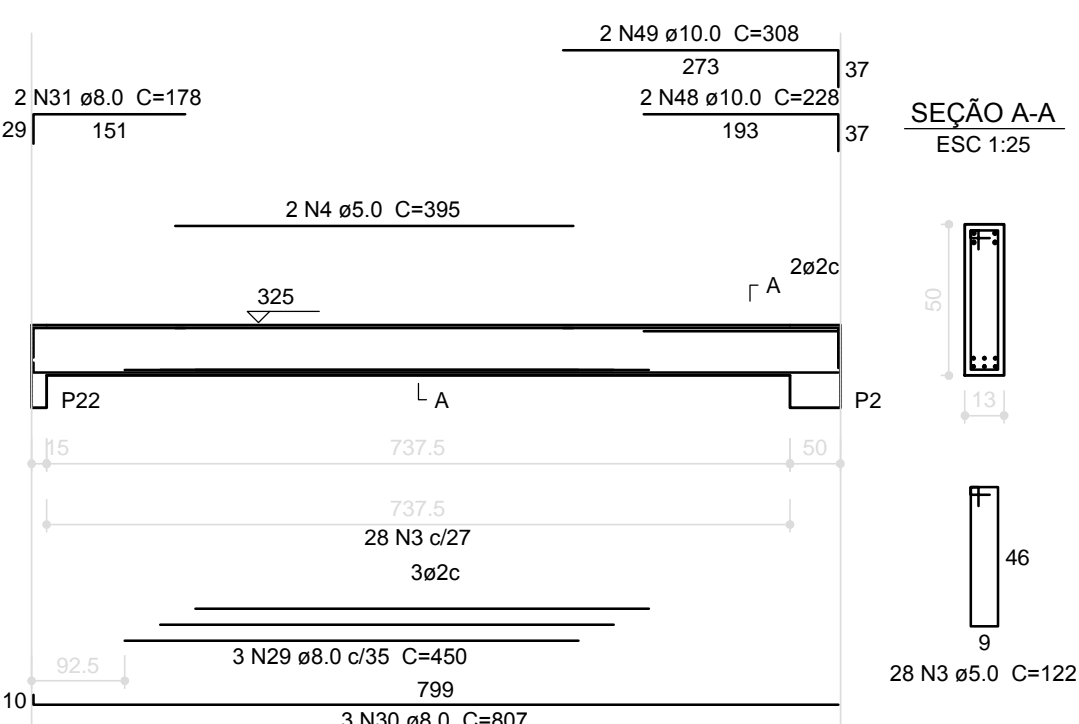
V1
ESC 1:75



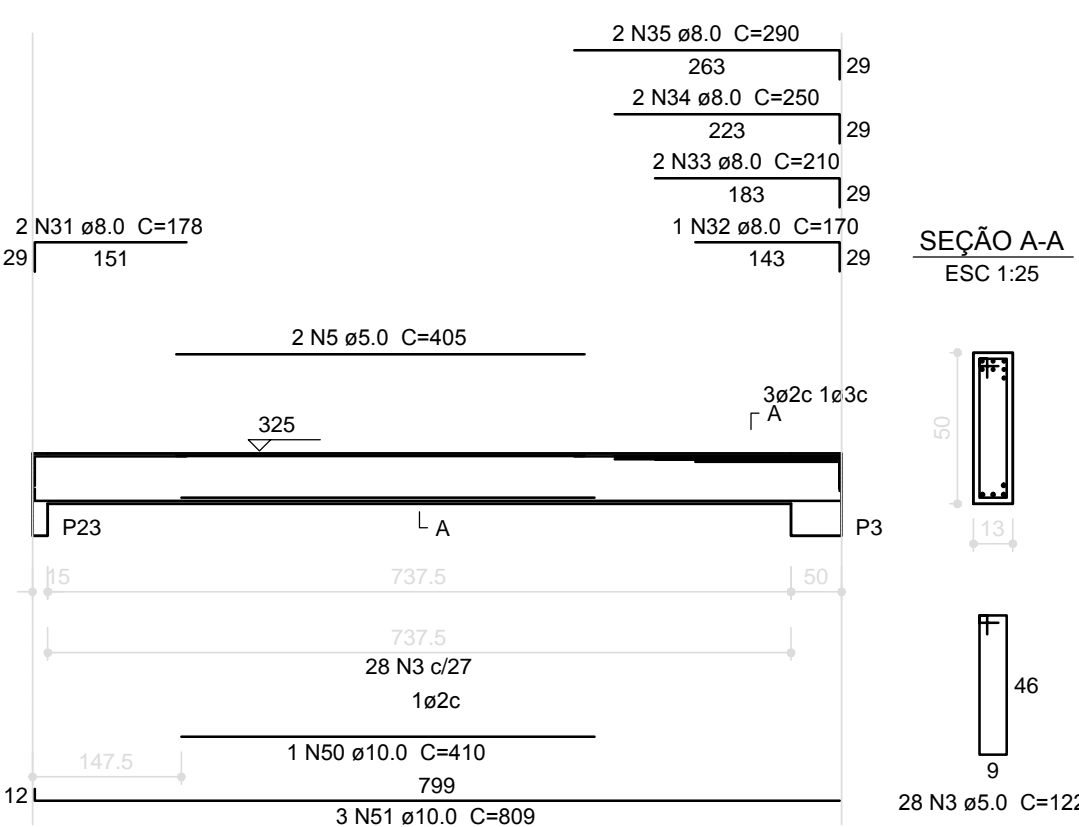
V3
ESC 1:75



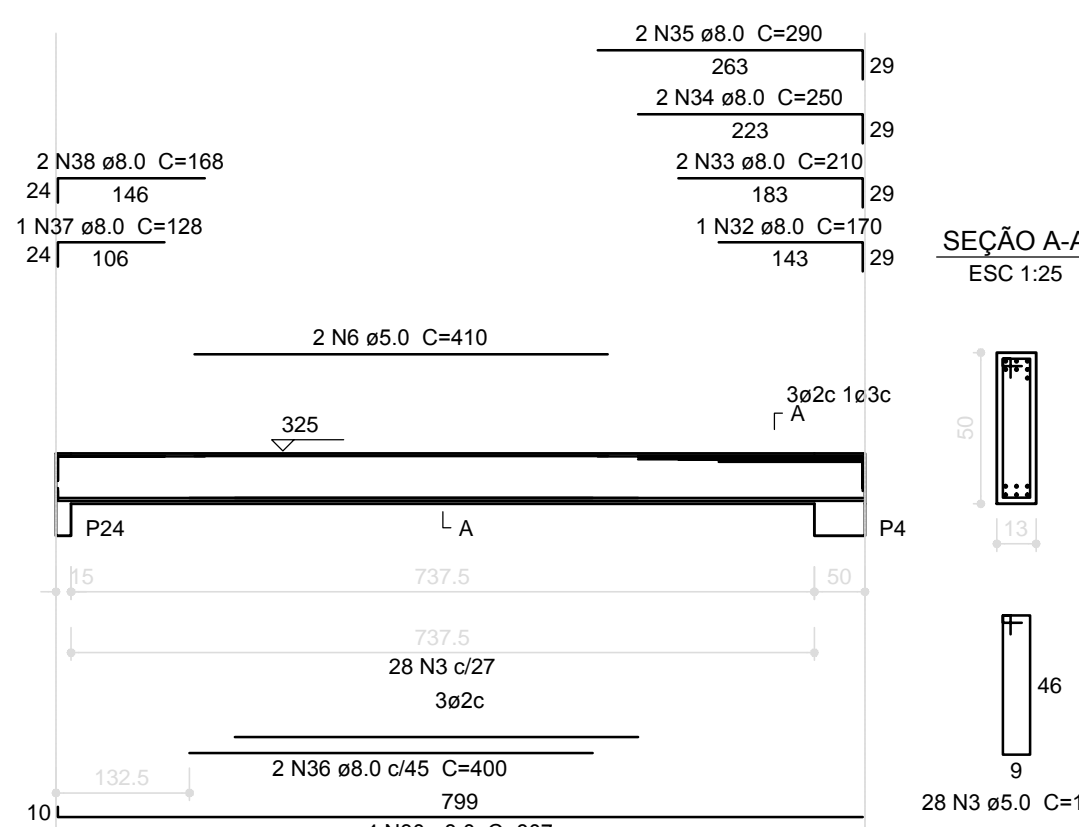
V6
ESC 1:75



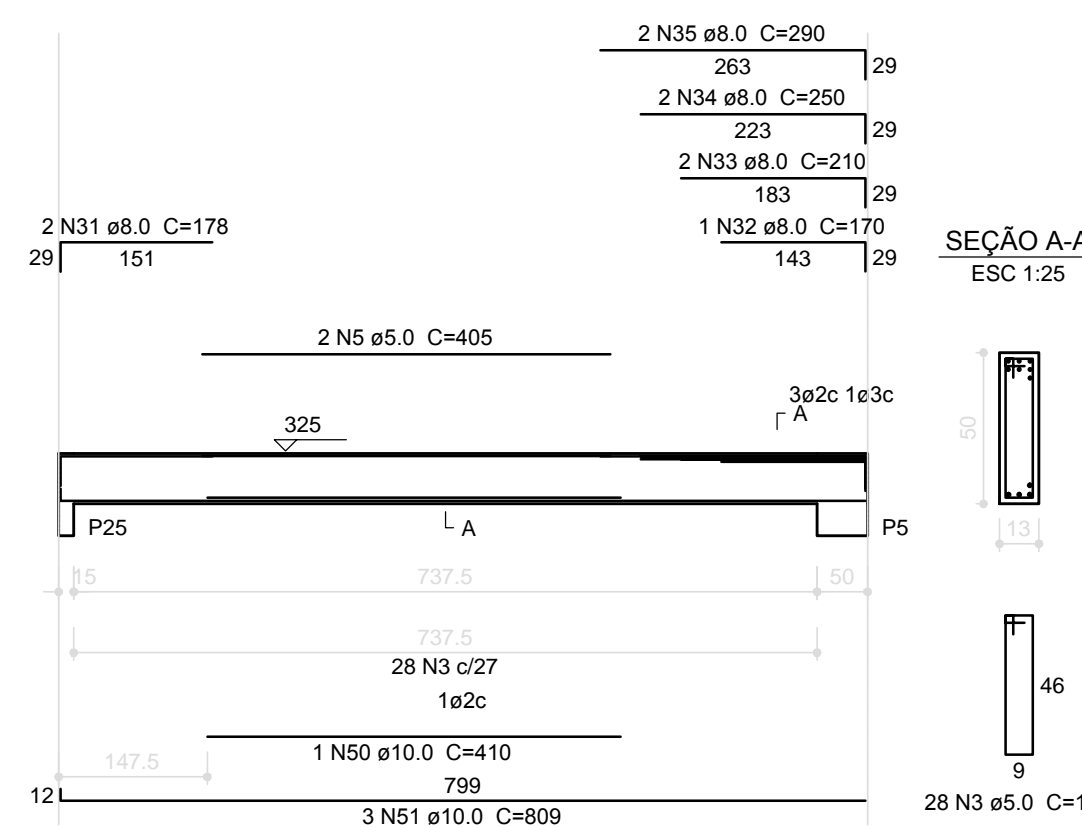
V7
ESC 1:75



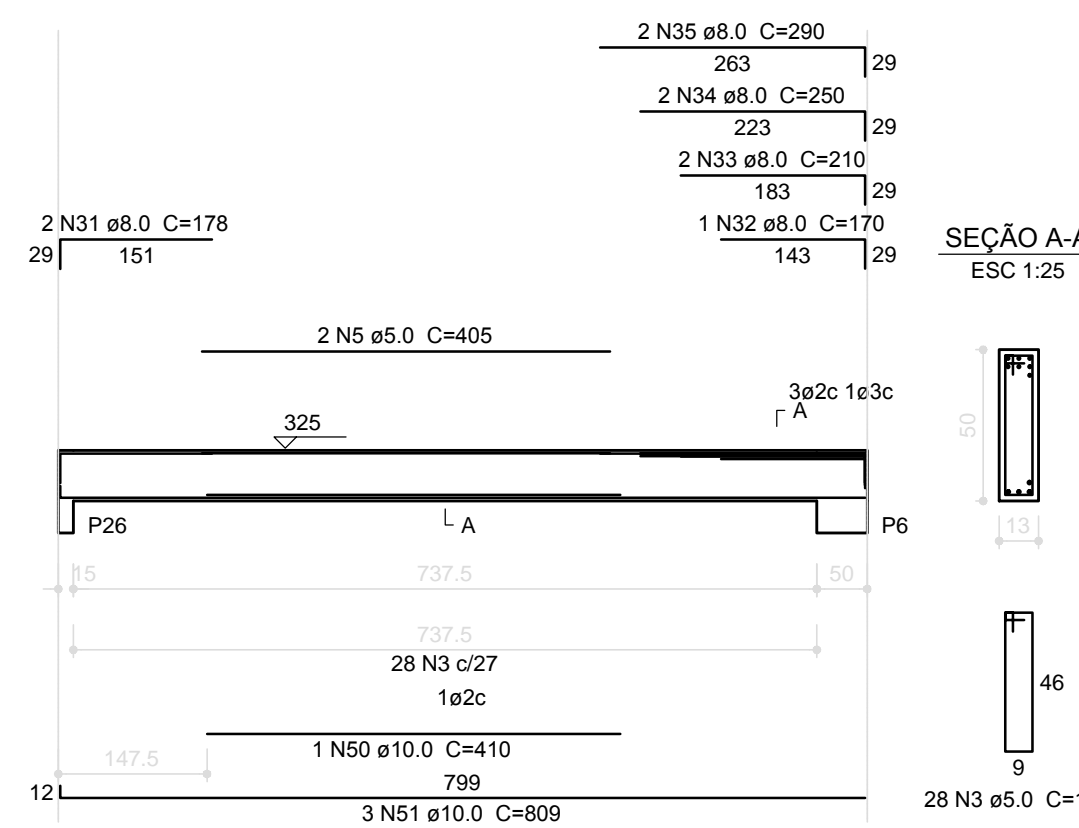
V8
ESC 1:75



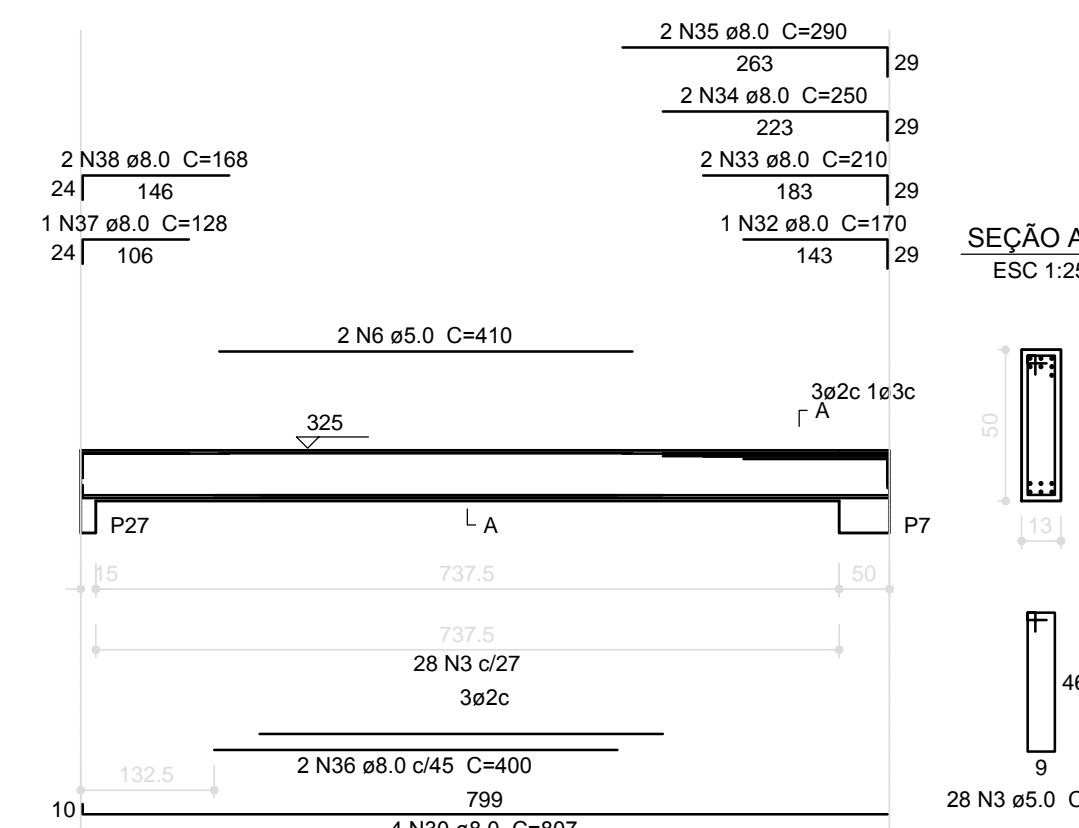
V9
ESC 1:75



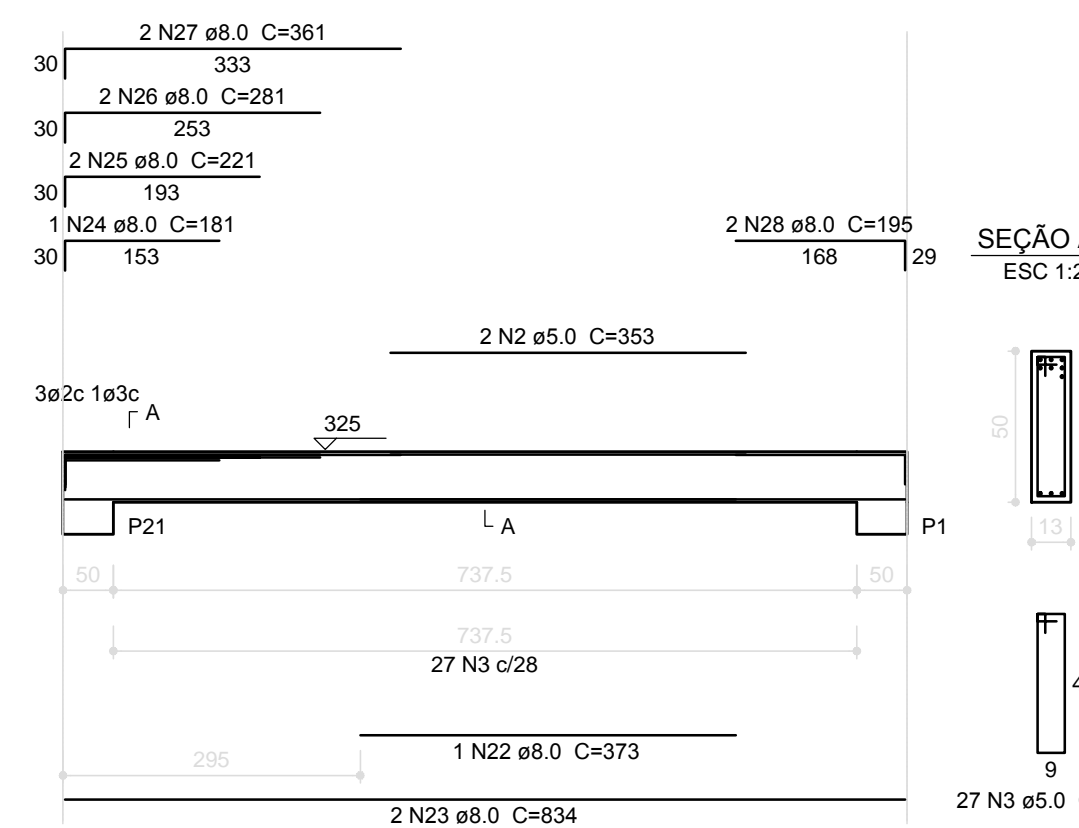
V10
ESC 1:75



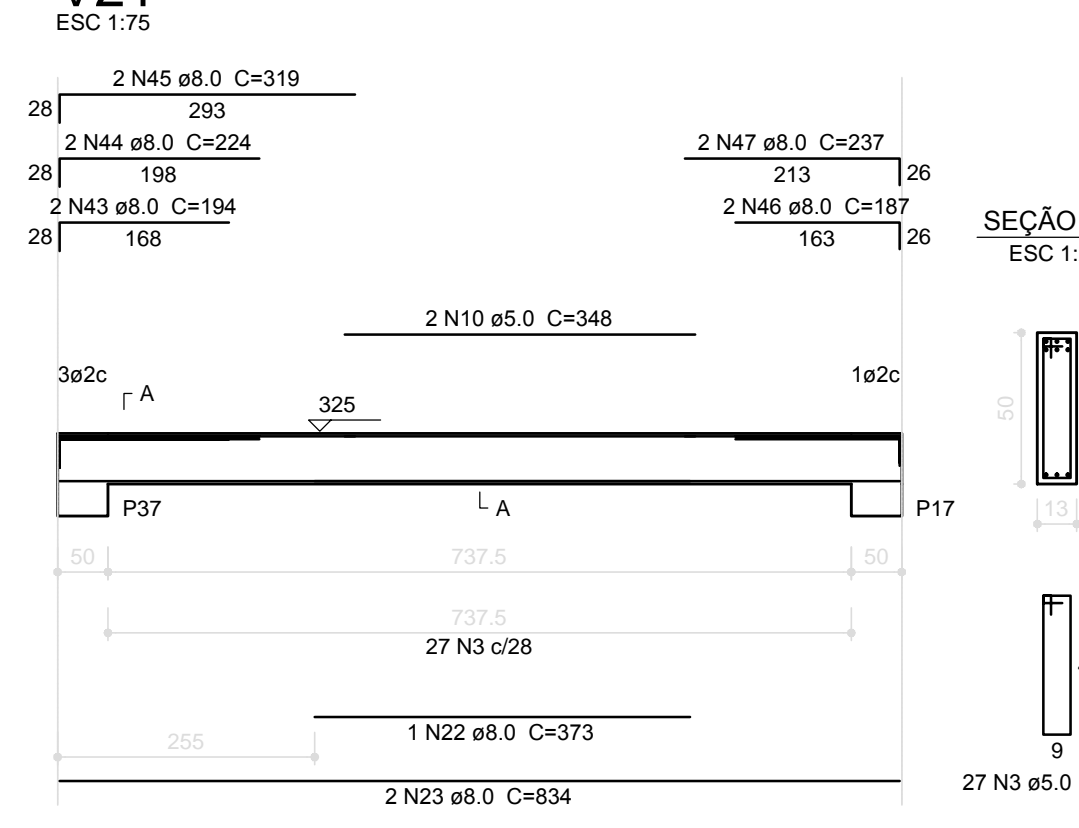
V11
ESC 1:75



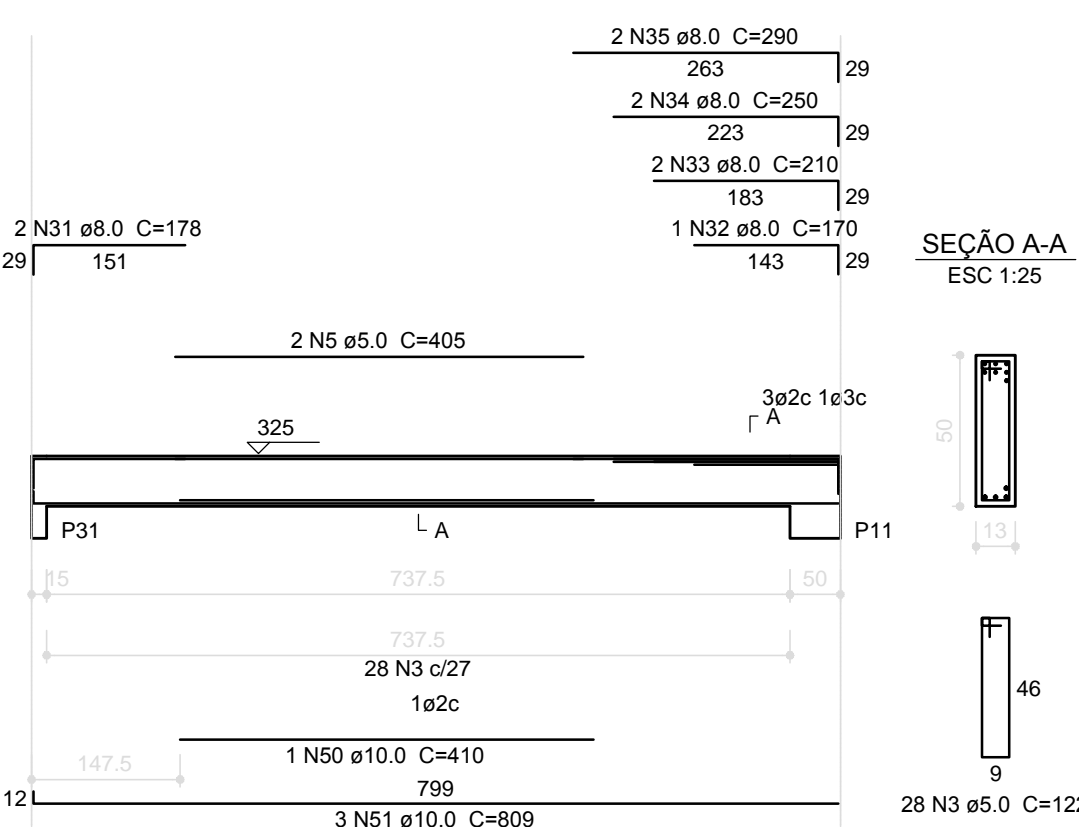
V5
ESC 1:75



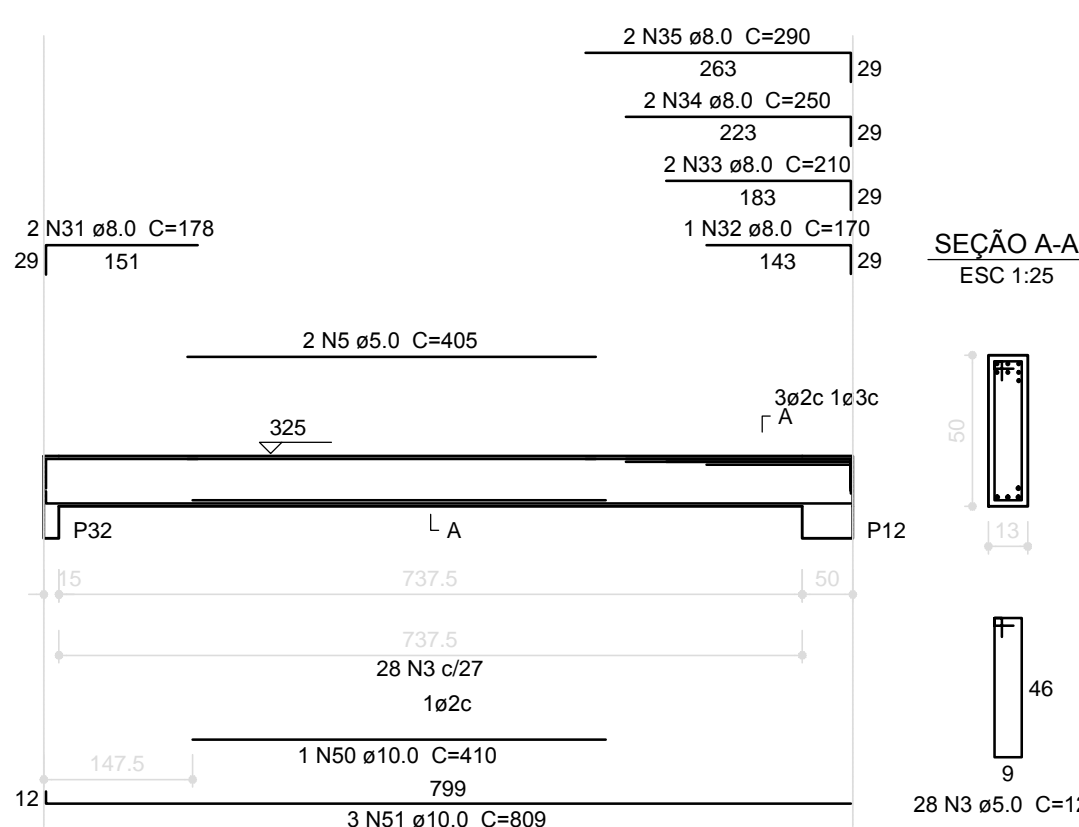
V21
ESC 1:75



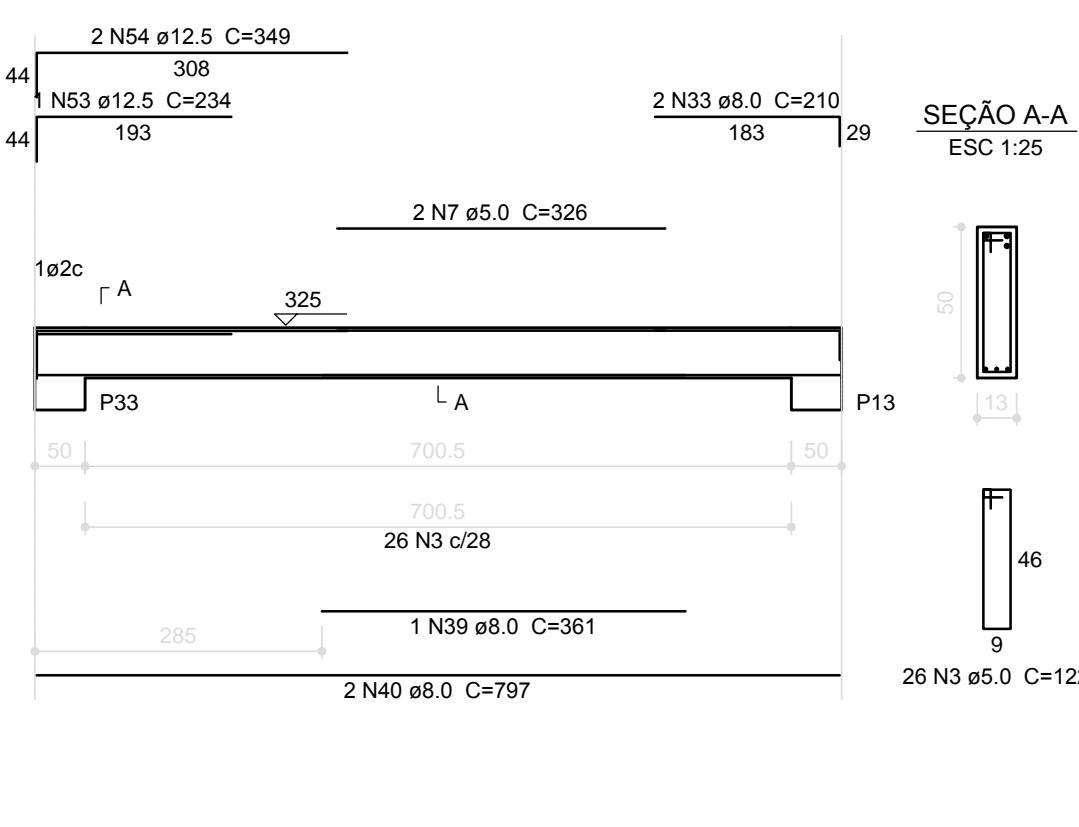
V15
ESC 1:75



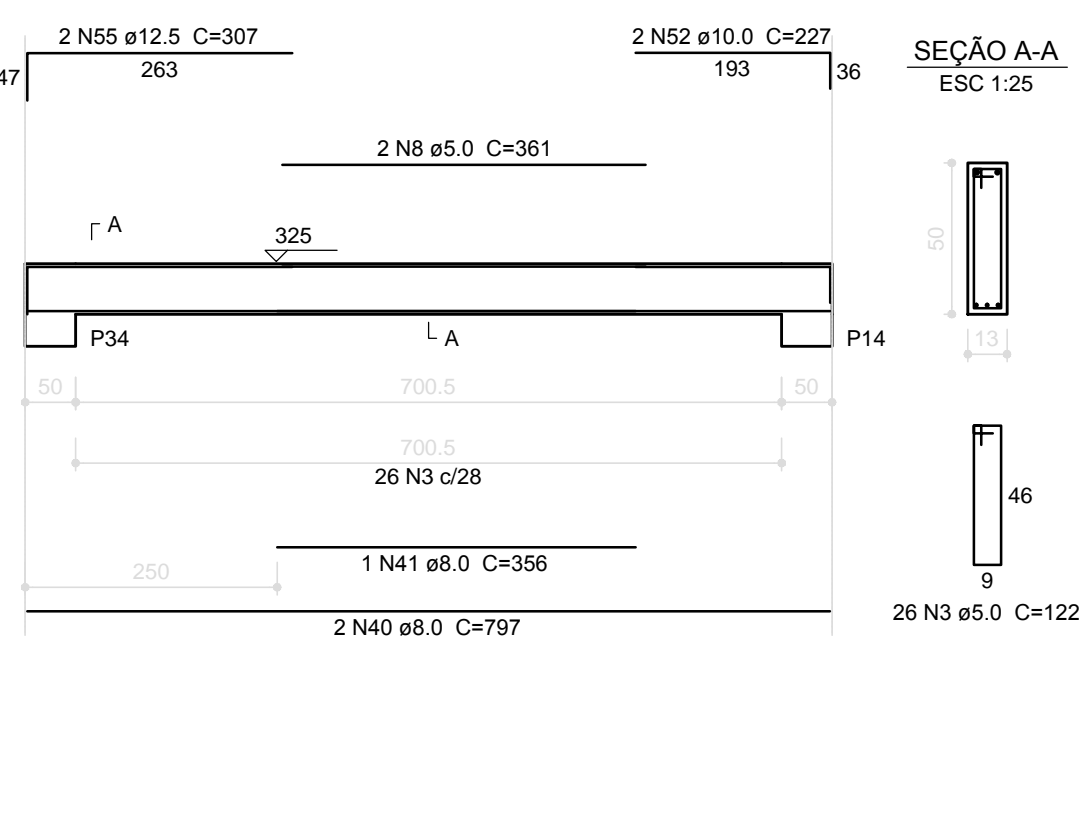
V16
ESC 1:75



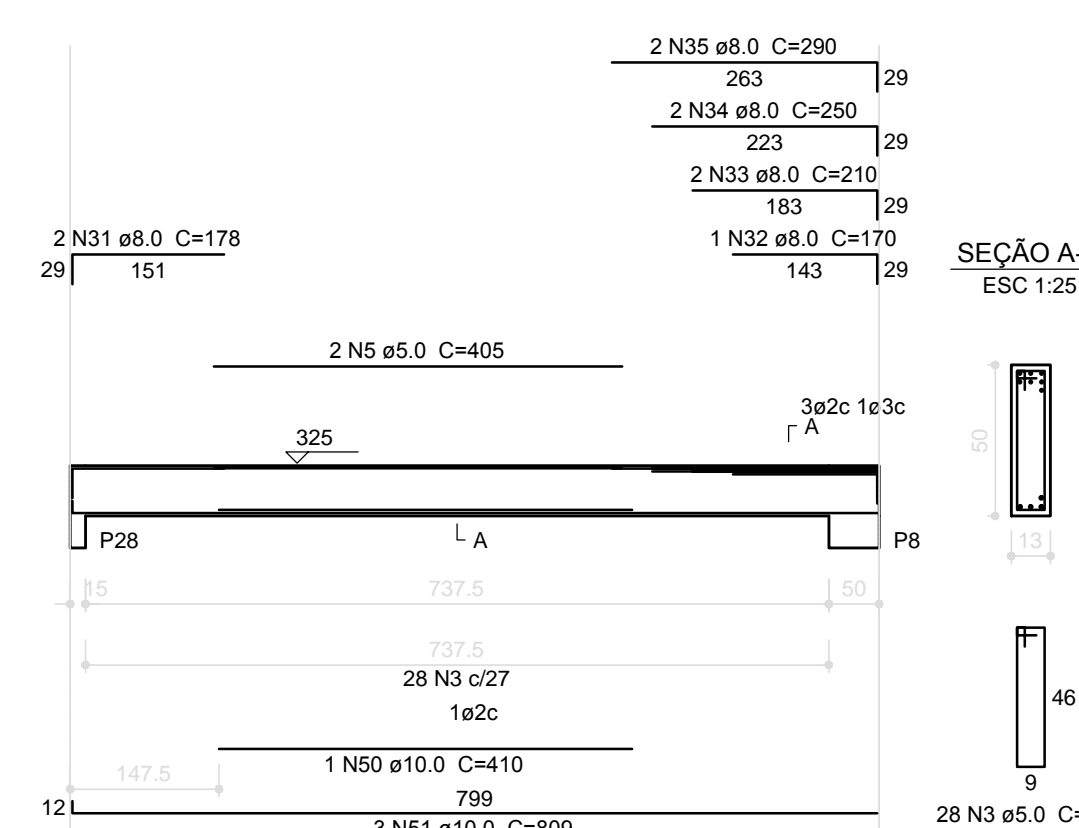
V17
ESC 1:75



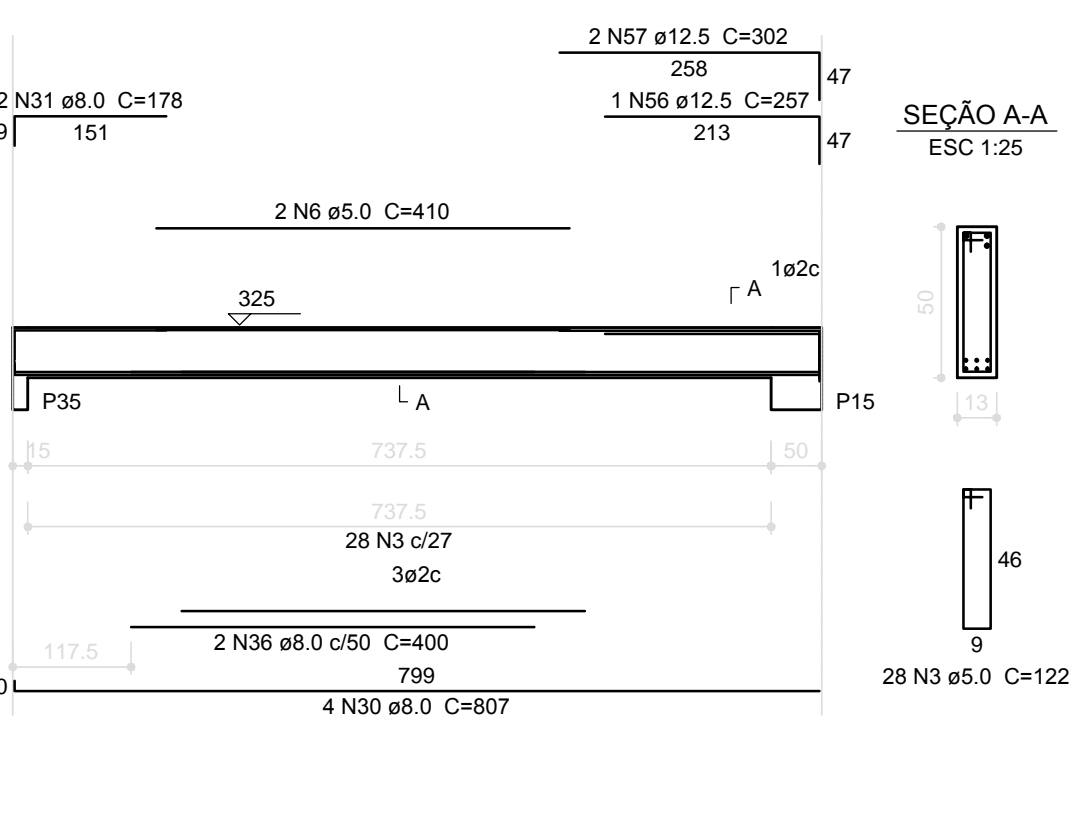
V18
ESC 1:75



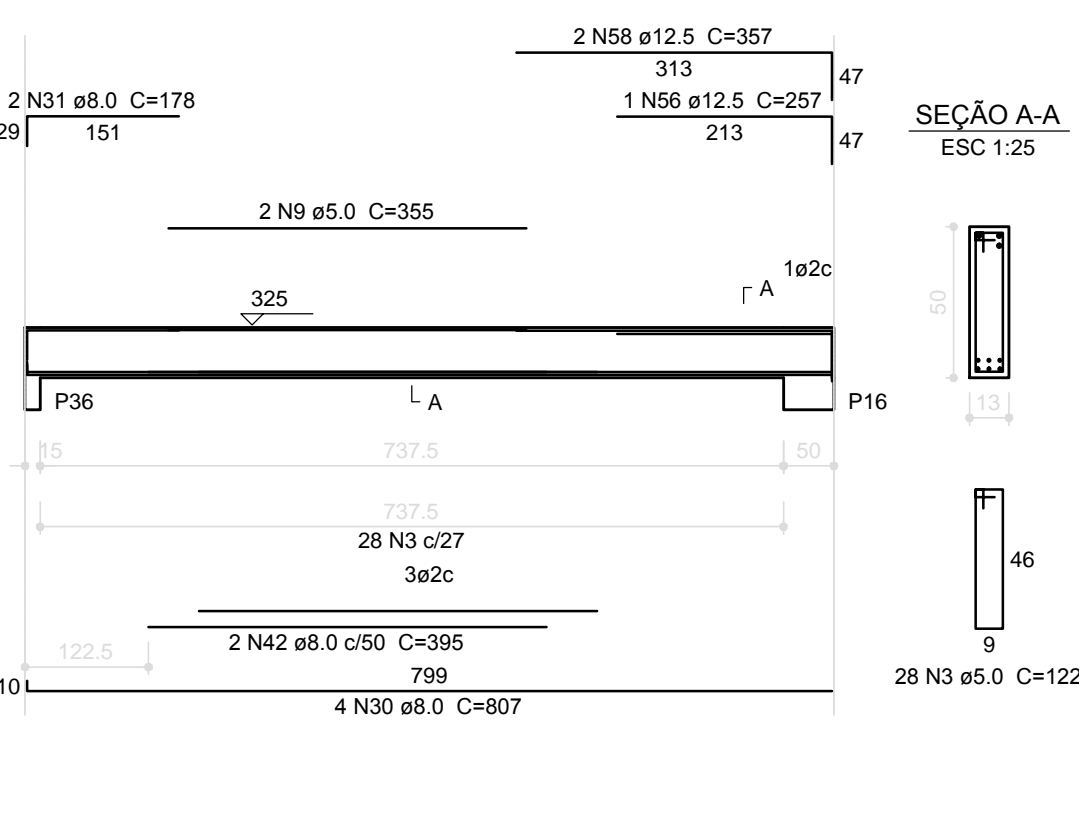
V12
ESC 1:75



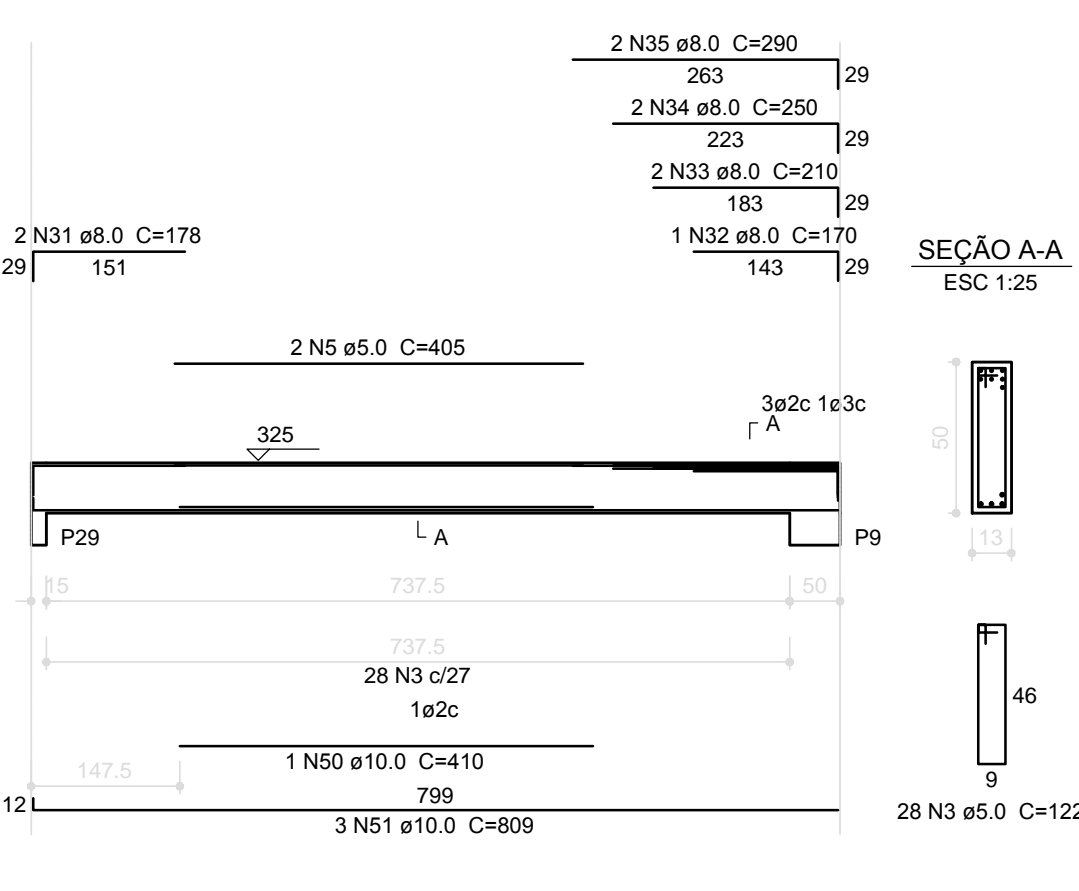
V19
ESC 1:75



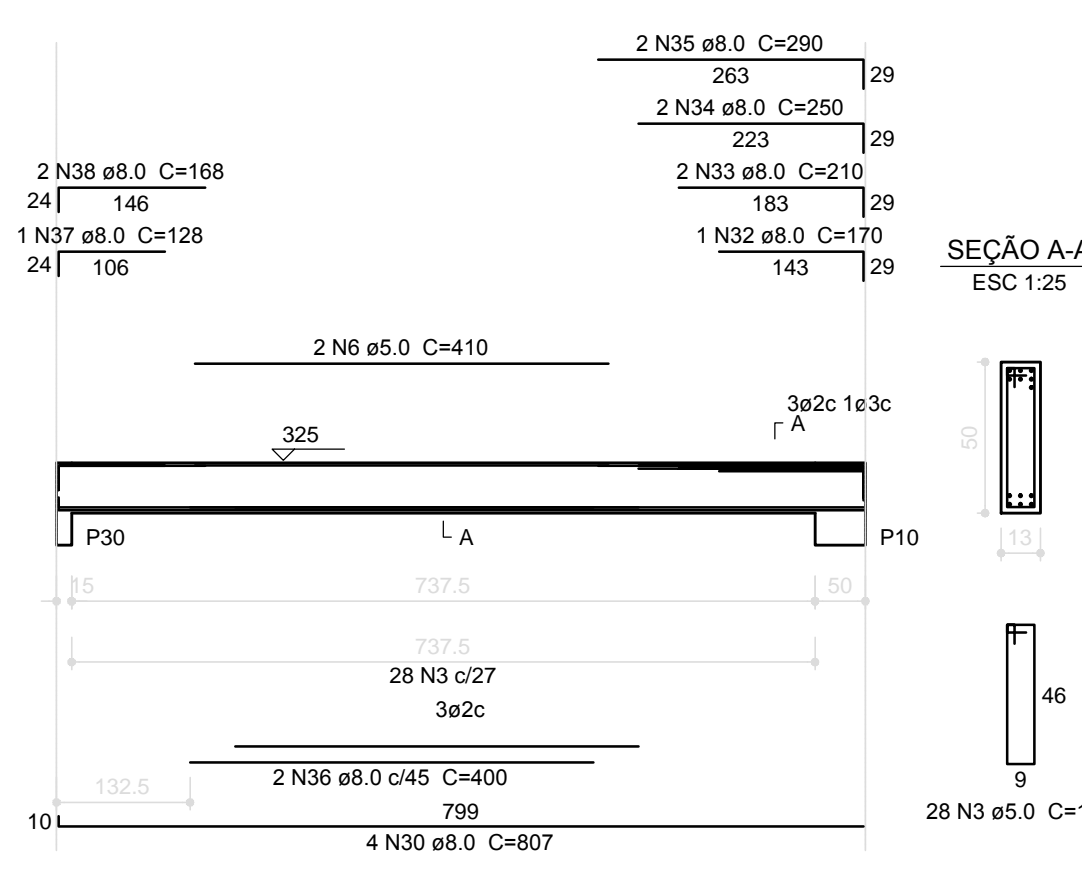
V20
ESC 1:75



V13
ESC 1:75



V14
ESC 1:75



Resumo do aço				
ACO	DIAM (mm)	C.TOTAL (m)	PESO + 10 % (kg)	
CA50	8.0	879.6	381.8	
	10.0	215.9	145	
CA60	12.5	33.8	35.8	
	5.0	1063.7	193.7	
PESO TOTAL (kg)				
CA50	562.6			
CA60	193.7			

Volume de concreto (C-25) = 11.27 m³
Área de forma = 200.8 m²

1 VIGAS NÍVEL 325
ESCALA: INDICADA

PROJETO PADRÃO - FNDE			
PROPRIETÁRIO: _____			
ENDEREÇO: _____			
MUNICÍPIO - UF: _____			
PROPRIETÁRIO _____		CREA _____	
RESP. TÉCNICO _____		CAU _____	
AUTOR DO PROJETO _____		CAU _____	
DLFO	CREA _____		
	RA _____		
OBSERVAÇÕES: _____			
ESCOLA 12 SALAS DE AULA			
PROJETO DE ESTRUTURA			
COORDENAÇÃO CGEST - Coordenação Geral de Infraestrutura Educativa	BLOCO E PEDAGÓGICO VIGAS NÍVEL 325		SCV
REVISÃO R.03	ESCALA INDICADA	FRANCHA 29/42	
FORMATO (114x694)	DATA EMISSÃO MAIO 2014		